

Rotating Lifting Points

For every lifting and lashing application



GUNNEBO
Industries



QUALITY



SAFETY



PERFORMANCE

We improve efficiency

Gunnebo Industries was founded in 1764 in Gunnebo, a town located in the south of Sweden. In the very beginning the company forged nails and bolts for ship-making, but soon expanded to manufacturing of chains and lifting products.

The secret of being in business for over 250 years, and still going strong, is by constantly improving our products and solutions to meet our customers' needs. This has been Gunnebo Industries' beacon since the very start. We take great pride in our heritage and it has provided us with an industry experience that is hard to come by, and all of it comes to the greater good for our customers, distributors and partners.

To meet our customers' needs is of course not only about developing new products; it is also about giving advice for difficult operations or improvements on existing products. In this case it is an expansion of our range of Lifting Points, as requested by the market. With the extended range of Lifting Points we can provide complete solutions developed for each customer's needs, enabling improved operational efficiency for our customers.

Choosing the right Lifting Point for your operation can be a challenge, you know as well as we do that most Lifting Points can be used for several purposes. In order to give some guidance, and to share what we consider to be best practice, we have created a cross-chart that provide indications to which Lifting Point that might be best suited for your specific purpose.



	RELP	RLP	DLP	BLP
Tight space	✓		✓	✓
Limited height (effective length)	✓	✓		
Vertical lift	✓	✓		✓
Angular lift		✓	✓	✓
Vertical rotation under load				✓
Tilting under load		✓	✓	✓
Sensitive load surface				✓
Single part lift	✓	✓		✓
Multiple part lift		✓	✓	✓
Integrated combination (hook or link)		✓		
RFID prepared		✓	✓	✓

This chart is intended to give guidance in choosing the right Lifting Point for your operation and is not rules for usage. For more advice contact your closest Gunnebo Industries dealer.

Rotating Eye

Lifting Point - RELP

The RELP is a compact and robust Lifting Point, ideal for top-mounting and when it is important to have quick and easy on-hooking. The bolt has a hexagon socket which makes it easy to mount and dismount but an even better feature is the marking. On the bolt itself information such as the Working Load Limit, mounting torque and manufacturing ID is stamped so it's always available for the operator.

The RELP will automatically adjust to the loading direction which decreases the risk to load it incorrectly and endangering the lifting operation. It also offers a Working Load Limit several times higher than the standard DIN 580 eye bolt, allowing for use of a smaller Lifting Point or higher capacity using the same thread size. For sensitive load surfaces the RELP is ideal, as the connecting sling hook will be positioned mainly parallel to the load surface, thus completely avoiding the hook causing damage on impact on the load.

As with all Gunnebo Industries products, each RELP sold have been proof loaded to 2.5 times the Working Load Limit and visually inspected by a licensed inspector. This is according to our knowledge and experience the most reliable method to detect possible deviations on the product or in the production process. We don't gamble with safety! All Gunnebo Industries Lifting Points are CE-marked.



Working Load Limits* - RELP

Symmetric Load (tonnes)													Tightening torque	Allen key
	No. of legs	Angle β	No. of legs	Angle β	No. of legs	Angle β	No. of legs	Angle β	No. of legs	Angle β	No. of legs	Angle β		
	1	0°	1	90°	2	0°	2	90°	2 symmetric	0-45° 45-60°	3 & 4 symmetric	0-45° 45-60°		
RELP -M8 x 1.25		0.7	0.3		1.4		0.6		0.4	0.3	0.6	0.4	10 Nm	8 mm
RELP 5/16"-18 UNC		0.7	0.3		1.4		0.6		0.4	0.3	0.6	0.4	7 Ft.Lbs	5/16"
RELP -M10 x 1.5		1.2	0.5		2.4		1.0		0.7	0.5	1.0	0.7	15 Nm	8 mm
RELP 3/8"-16 UNC		1.2	0.5		2.4		1.0		0.7	0.5	1.0	0.7	11 Ft.Lbs	5/16"
RELP -M12 x 1.75		2.0	0.8		4.0		1.6		1.1	0.8	1.6	1.2	27 Nm	8 mm
RELP 1/2"-13 UNC		2.0	0.8		4.0		1.6		1.1	0.8	1.6	1.2	20 Ft.Lbs	5/16"
RELP -M16 x 2		3.5	1.5		7.0		3.0		2.1	1.5	3.1	2.2	60 Nm	8 mm
RELP 5/8"-11 UNC		3.5	1.5		7.0		3.0		2.1	1.5	3.1	2.2	44 Ft.Lbs	5/16"
RELP -M20 x 2.5		6.1	2.4		12.2		4.8		3.3	2.4	5.0	3.6	90 Nm	8 mm
RELP 3/4"-10 UNC		5.0	2.3		10.0		4.6		3.1	2.3	4.8	3.4	66 Ft.Lbs	5/16"
RELP 7/8"-9 UNC		6.1	2.4		12.2		4.8		3.3	2.4	5.0	3.6	66 Ft.Lbs	5/16"
RELP -M24 x 3		8.1	3.3		16.2		6.6		4.6	3.3	6.9	4.9	135 Nm	19 mm
RELP 1"-8 UNC		8.1	3.3		16.2		6.6		4.6	3.3	6.9	4.9	100 Ft.Lbs	3/4"
RELP -M30 x 3.5		12.1	4.6		24.2		9.2		6.4	4.6	9.6	6.9	270 Nm	19 mm
RELP 1 1/4"-7 UNC		12.1	4.6		24.2		9.2		6.4	4.6	9.6	6.9	200 Ft.Lbs	3/4"
RELP -M36 x 4		16.1	7.1		32.2		14.2		9.9	7.1	14.9	10.6	320 Nm	19 mm
RELP 1 1/2"-6 UNC		16.1	7.1		32.2		14.2		9.9	7.1	14.9	10.6	236 Ft.Lbs	3/4"
RELP -M42 x 4.5		24	9.1		48		18.2		12.7	9.1	19.1	13.6	600 Nm	19 mm
RELP 1 3/4"-5 UNC		24	9.1		48		18.2		12.7	9.1	19.1	13.6	440 Ft.Lbs	3/4"
RELP -M48 x 5		32	12.1		64		24.2		16.9	12.1	25.4	18.1	800 Nm	19 mm
RELP 2"-4.5 UNC		32	12.1		64		24.2		16.9	12.1	25.4	18.1	590 Ft.Lbs	3/4"

Rotating Eye Lifting Point - RELP

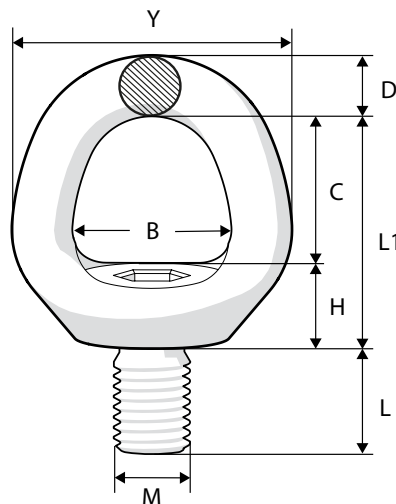
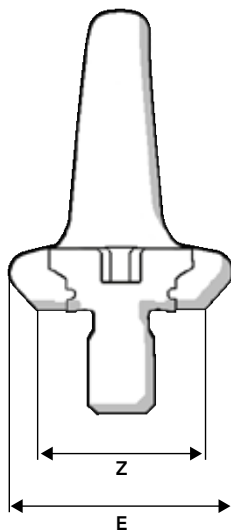


Art. no.	Code	Dimensions in mm										Weight kgs
		B	C	D	E	H	L	L1	M	Y	Z	
Z102408	REL-P-M8 x 1.25	28	28	11	40	14	15	42	8	50	29	0.2
Z102410	REL-P-M10 x 1.5	28	28	11	40	14	15	42	10	50	29	0.2
Z102412	REL-P-M12 x 1.75	32	33	13	46	13	20	47	12	58	38	0.3
Z102416	REL-P-M16 x 2	39	41	15	53	16	24	57	16	70	40	0.5
Z102420	REL-P-M20 x 2.5	42	43	16	60	18	30	60	20	78	46	0.7
Z102424	REL-P-M24 x 3	50	51	19	68	20	36	71	24	88	44	1.1
Z102430	REL-P-M30 x 3.5	60	62	26	85	28	45	90	30	112	64	2.4
Z102436	REL-P-M36 x 4	72	72	32	97	32	54	104	36	136	74	4.1
Z102442	REL-P-M42 x 4.5	82	82	38	120	37	63	119	42	158	91	6.7
Z102448	REL-P-M48 x 5	94	96	43	142	39	72	135	48	180	102	9.9

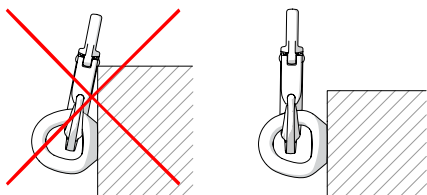
REL-P with UNC thread



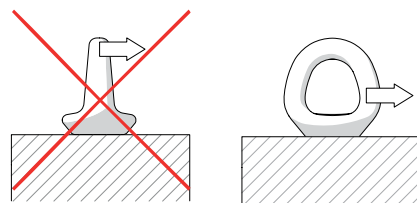
Art. no.	Code	Dimensions in m										M inch	Weight kgs
		B	C	D	E	H	L	L1	Y	Z			
Z102508	REL P 5/16"-18 UNC	28	28	11	40	14	15	42	50	29	5/16"	0.2	
Z102510	REL P 3/8"-16 UNC	28	28	11	40	14	15	42	50	29	3/8"	0.2	
Z102512	REL P 1/2"-13 UNC	32	33	13	46	13	20	47	58	38	1/2"	0.3	
Z102516	REL P 5/8"-11 UNC	39	41	15	53	16	24	57	70	40	5/8"	0.5	
Z102520	REL P 3/4"10 UNC	42	43	16	60	18	30	60	78	46	3/4"	0.7	
Z102521	REL P 7/8"-9 UNC	42	43	16	60	18	30	60	78	46	7/8"	0.7	
Z102524	REL P 1"-8 UNC	50	51	19	68	20	36	71	88	44	1"	1.1	
Z102530	REL P 1 1/4"-7 UNC	60	62	26	85	28	45	90	112	64	1 1/4"	2.4	
Z102536	REL P 1 1/2"-6 UNC	72	72	32	97	32	54	104	136	74	1 1/2"	4.1	
Z102542	REL P 1 3/4"-5 UNC	82	82	38	120	37	63	119	158	91	1 3/4"	6.8	
Z102548	REL P 2"-4.5 UNC	94	96	43	142	39	72	135	180	102	2"	10.0	



User advice



Make sure the hook does not lie against the load surface during lift.



Never side-load the RELP.

Integrated
combination
(hook or link)

RFID prepared



Tight space



Limited height



Vertical lift



Angular lift

Vertical rotation
under load

Tilting under load

Sensitive load
surface

Single part lift



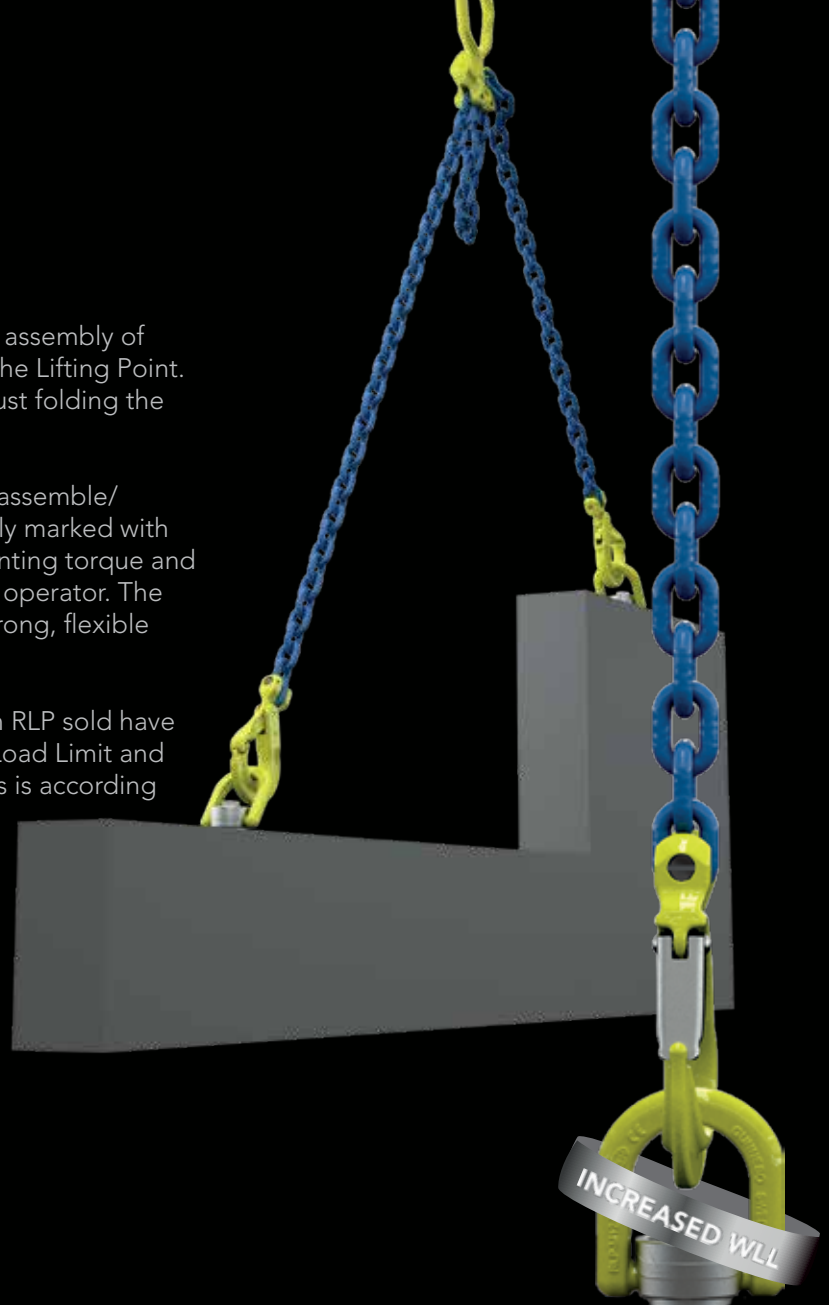
Multiple part lift

Rotating Lifting Point - RLP

The RLP has a dismountable D-ring to enable assembly of roundsling, master link or hook directly onto the Lifting Point. The disassembly of the RLP is made easy by just folding the D-ring forward and push down.

RLP has a hexagon bolt to make it easy to disassemble/assemble with a wrench. The bolt is also clearly marked with information such as Working Load Limit, mounting torque and manufacturer ID so it's always available to the operator. The RLP rotates 360° and pivots 180°, making it strong, flexible and reliable.

As with all Gunnebo Industries products, each RLP sold have been proof loaded to 2.5 times the Working Load Limit and visually inspected by a licensed inspector. This is according to our knowledge and experience the most reliable method to detect possible deviations on the product or in the production process. We don't gamble with safety! All Gunnebo Industries Lifting Points are CE-marked.



Working Load Limits* - RLP

Symmetric Load (tonnes)										
No. of legs	1	1	2	2	2 symmetric		3 & 4 symmetric			
Angle B	0°	90°	0°	90°	0-45°	45-60°	0-45°	45-60°	Tightening torque	Spanner size
RLP - M8 x 1.25	0.8	0.4	1.6	0.8	0.5	0.4	0.8	0.6	10 Nm	13 mm
RLP 5/16"-18 UNC	0.8	0.4	1.6	0.8	0.5	0.4	0.8	0.6	7 Ft.Lbs	1/2"
RLP - M10 x 1.5	1.2	0.7	2.4	1.4	0.9	0.7	1.4	1.0	15 Nm	13 mm
RLP 3/8"-16 UNC	1.2	0.65	2.4	1.3	0.9	0.6	1.3	0.9	11 Ft.Lbs	1/2"
RLP - M12 x 1.75	2.0	1.2	4.0	2.4	1.6	1.2	2.5	1.8	27 Nm	24 mm
RLP 1/2"-13 UNC	2.0	1.2	4.0	2.4	1.6	1.2	2.5	1.8	20 Ft.Lbs	15/16"
RLP - M16 x 2	3.2	2.0	6.4	4.0	2.8	2.0	4.2	3.0	60 Nm	24 mm
RLP 5/8"-11 UNC	3.2	2.0	6.4	4.0	2.8	2.0	4.2	3.0	44 Ft.Lbs	15/16"
RLP - M20 x 2.5	5.6	2.8	11.2	5.6	3.9	2.8	5.8	4.2	90 Nm	32 mm
RLP 3/4"-10 UNC	5.0	2.5	10.0	5.0	3.5	2.5	5.2	3.7	66 Ft.Lbs	1 5/16"
RLP 7/8"-9 UNC	5.6	2.8	11.2	5.6	3.9	2.8	5.8	4.2	66 Ft.Lbs	1 5/16"
RLP - M24 x 3	8.0	4.6	16.0	9.2	6.4	4.6	9.6	6.9	135 Nm	32 mm
RLP 1"-8 UNC	8.0	4.6	16.0	9.2	6.4	4.6	9.6	6.9	100 Ft.Lbs	1 5/16"
RLP - M30 x 3.5	12.0	6.0	24.0	12.0	8.4	6.0	12.6	9.0	270 Nm	55 mm
RLP 1 1/4"-7 UNC	12.0	6.0	24.0	12.0	8.4	6.0	12.6	9.0	200 Ft.Lbs	2 1/4"
RLP - M36 x 4	14.0	8.0	28.0	16.0	11.2	8.0	16.8	12.0	320 Nm	55 mm
RLP 1 1/2"-6 UNC	14.0	8.0	28.0	16.0	11.2	8.0	16.8	12.0	236 Ft.Lbs	2 1/4"
RLP - M42 x 4.5	16.0	14.0	32.0	28.0	19.6	14.0	29.4	21.0	600 Nm	75 mm
RLP 1 3/4"-5 UNC	16.0	14.0	32.0	28.0	19.6	14.0	29.4	21.0	440 Ft.Lbs	3"
RLP - M48 x 5	20.0	16.0	40.0	32.0	22.4	16.0	33.6	24.0	800 Nm	75 mm
RLP 2"-4.5 UNC	20.0	16.0	40.0	32.0	22.4	16.0	33.6	24.0	590 Ft.Lbs	3"

* Safety factor 4:1

Rotating Lifting Point - RLP



Art. no. Standard bolt length	L	Art.no. Long bolt length**	L2	Code	Dimensions in mm								Weight kgs
					B	C	D	L1	M	X	Y	Z	
Z101708	16	Z1017080L	101	RLP-M8 x 1.25	42	35	12	62	8	27	64	Ø40	0.3
Z101710	16	Z1017100L	101	RLP-M10 x 1.5	42	35	12	62	10	27	64	Ø40	0.3
Z101712	25	Z1017120L	120	RLP-M12 x 1.75	57	46	19	88	12	42	91	Ø54	1.0
Z101716	25	Z1017160L	160	RLP-M16 x 2	57	46	19	88	16	42	91	Ø54	1.0
Z101720	36	Z1017200L	200	RLP-M20 x 2.5	83	55	28	110	20	55	133	Ø80	2.9
Z101724	36	Z1017240L	240	RLP-M24 x 3	83	55	28	110	24	55	133	Ø80	2.9
Z101730	58	Z1017300L	300	RLP-M30 x 3.5	114	70	34	148	30	78	182	Ø111	7.1
Z101736	58	Z1017360L	300	RLP-M36 x 4	114	70	34	148	36	78	182	Ø111	7.3
Z101742	81	Z1017420L	301	RLP-M42 x 4.5	149	91	40.4	190	42	99	229	Ø142	14.3
Z101748	81	Z1017480L	301	RLP-M48 x 5	149	91	40.4	190	48	99	229	Ø142	14.5

** Long bolt supplied with nut and washer.

Spare parts - Standard length and long length bolts are available as spare parts.

RLP with UNC thread



Art. no. Standard bolt length	L	Art.no. long bolt length**	L2	Code	B	C	Dimensions in mm					M inch	Weight kgs
							D	L1	X	Y	Z		
Z101808	16	Z1018080L	101	RLP-5/16"-18 UNC	42	35	12	62	27	64	Ø40	5/16"	0.3
Z101810	16	Z1018100L	101	RLP-3/8"-16 UNC	42	35	12	62	27	64	Ø40	3/8"	0.3
Z101812	25	Z1018120L	120	RLP-1/2"-13 UNC	57	46	19	88	42	91	Ø54	1/2"	1.0
Z101816	25	Z1018160L	160	RLP-5/8"-11 UNC	57	46	19	88	42	91	Ø54	5/8"	1.0
Z101820	36	Z1018200L	200	RLP-3/4"-10 UNC	83	55	28	110	55	133	Ø80	3/4"	2.9
Z101821	36	Z1018210L	240	RLP-7/8"-9 UNC	83	55	28	110	55	133	Ø80	7/8"	2.9
Z101824	36	Z1018240L	240	RLP 1"-8 UNC	83	55	28	110	55	133	Ø80	1"	2.9
Z101830	58	Z1018300L	300	RLP 1 1/4"-7 UNC	114	70	34	148	78	182	Ø111	1 1/4"	7.1
Z101836	58	Z1018360L	300	RLP 1 1/2"-6 UNC	114	70	34	148	78	182	Ø111	1 1/2"	7.3
Z101842	81	Z1018420L	301	RLP 1 3/4"-5 UNC	149	91	40.4	190	99	229	Ø142	1 3/4"	14.4
Z101848	81	Z1018480L	301	RLP 2"-4.5 UNC	149	91	40.4	190	99	229	Ø142	2"	14.7

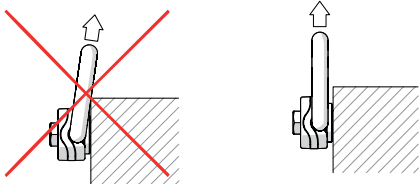
** Long bolt supplied with nut and washer.

Spare parts - Standard length and long length bolts are available as spare parts.

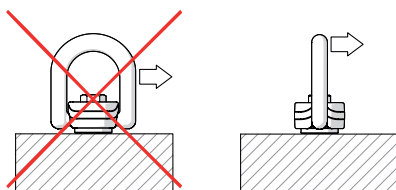


Disassembly of the RLP is made easy by just folding the D-ring forward and push down.

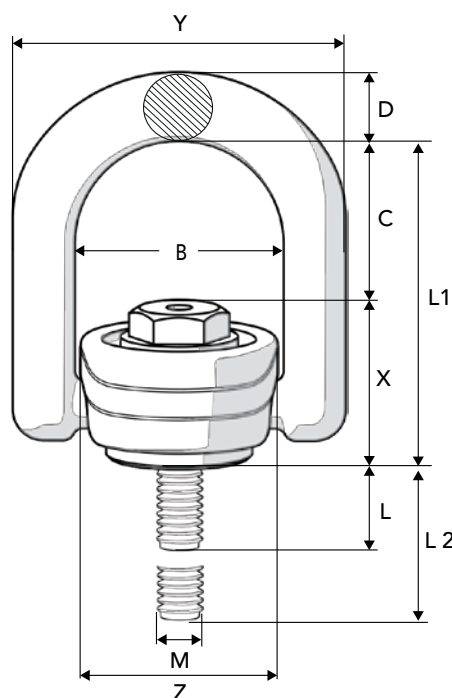
User advice



Make sure the D-ring does not lie against the load surface during lift.



Never side-load the RLP.



Tight space

Limited height

Vertical lift

Angular lift

Vertical rotation
under load

Tilting under load

Sensitive load
surface

Single part lift

Multiple part lift

Integrated
combination
(hook or link)

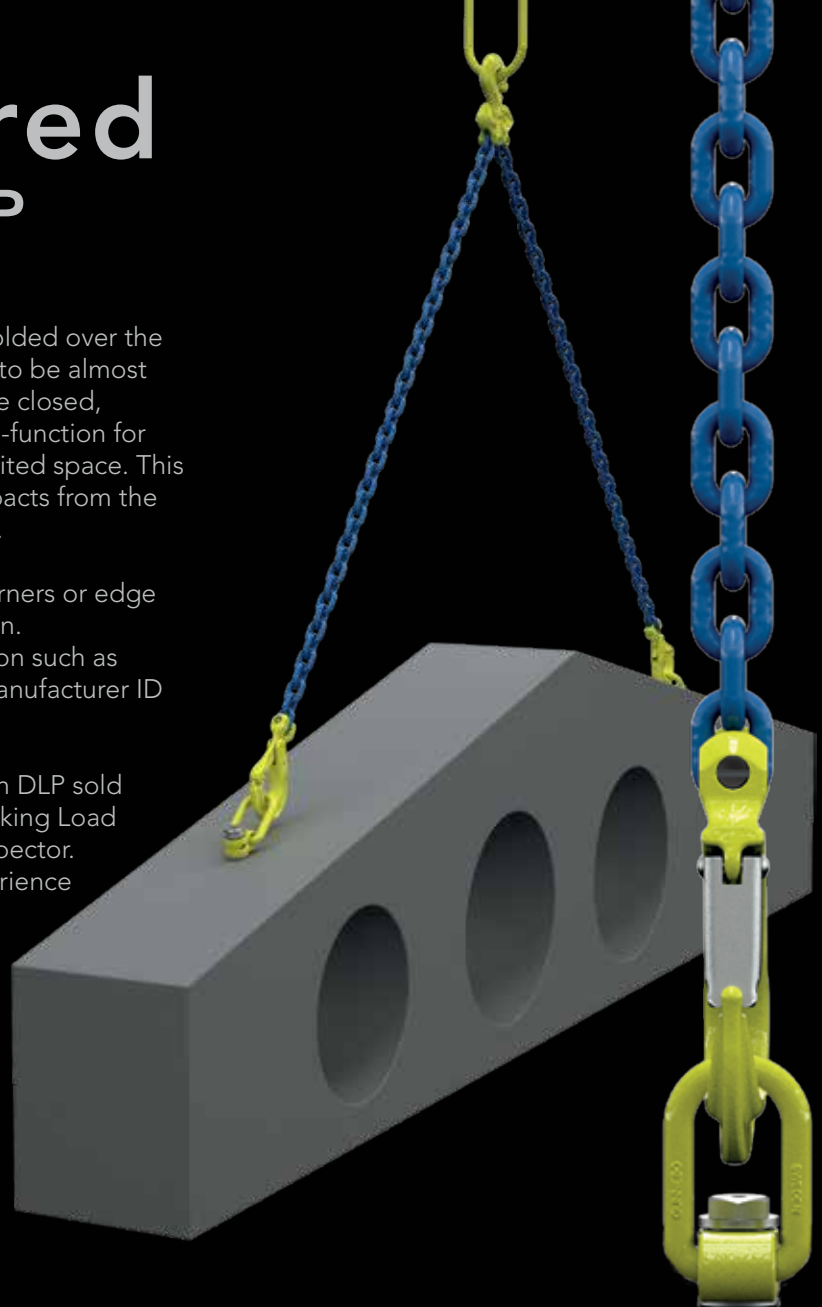
RFID prepared

De-centered Lifting Point - DLP

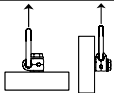
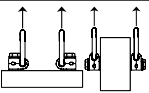
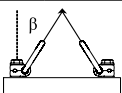
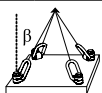
The design of the DLP allows the link to be folded over the housing when idle, allowing the Lifting Point to be almost completely stowed away when not in use. The closed, oblong link is also equipped with a "stay-up"-function for easy on-hooking, especially when there is limited space. This saves both the load from damage due to impacts from the hook, as well as making rigging fast and easy.

The DLP is ideal in narrow spaces, such as corners or edge position, as the housing has a compact design. The bolt is also clearly marked with information such as Working Load Limit, mounting torque and manufacturer ID so it's always available to the operator.

As with all Gunnebo Industries products, each DLP sold have been proof loaded to 2.5 times the Working Load Limit and visually inspected by a licensed inspector. This is according to our knowledge and experience the most reliable method to detect possible deviations on the product or in the production process. We don't gamble with safety! All Gunnebo Industries Lifting Points are CE-marked.



Working Load Limits* - DLP

Symmetric Load (tonnes)								
No. of legs	1	2	2 symmetric		3 & 4 symmetric			
Angle β	$0^\circ < \beta < 90^\circ$	$0^\circ < \beta < 90^\circ$	$0-45^\circ$	$45-60^\circ$	$0-45^\circ$	$45-60^\circ$	Tightening torque	Spanner size
DLP -M8 x 1.25	0.35	0.70	0.5	0.35	0.7	0.5	10 Nm	13 mm
DLP 5/16"-18 UNC	0.35	0.70	0.5	0.35	0.7	0.5	7 Ft.Lbs	1/2"
DLP -M10 x 1.5	0.65	1.30	0.9	0.65	1.4	1.0	15 Nm	13 mm
DLP 3/8"-16 UNC	0.60	1.20	0.8	0.60	1.3	1.0	11 Ft.Lbs	1/2"
DLP -M12 x 1.75	1.0	2.0	1.4	1.0	2.1	1.5	27 Nm	24 mm
DLP 1/2"-13 UNC	1.0	2.0	1.4	1.0	2.1	1.5	20 Ft.Lbs	15/16"
DLP -M16 x 2	1.8	3.6	2.5	1.8	3.7	2.7	60 Nm	24 mm
DLP 5/8"-11 UNC	1.6	3.2	2.2	1.6	3.3	2.4	44 Ft.Lbs	15/16"
DLP -M20 x 2.5	2.6	5.2	3.5	2.6	5.4	3.9	90 Nm	32 mm
DLP -3/4"-10 UNC	2.2	4.4	3.0	2.2	4.6	3.3	66 Ft.Lbs	1 5/16"
DLP -7/8"-9 UNC	2.6	5.2	3.5	2.6	5.4	3.9	66 Ft.Lbs	1 5/16"
DLP -M24 x 3	4.1	8.2	5.7	4.1	8.6	6.1	135 Nm	32 mm
DLP -1"-8 UNC	4.1	8.2	5.7	4.1	8.6	6.1	100 Ft.Lbs	1 5/16"
DLP -M30 x 3.5	5.0	10.0	7.0	5.0	10.5	7.5	270 Nm	55 mm
DLP -1 1/4"-7 UNC	5.0	10.0	7.0	5.0	10.5	7.5	200 Ft.Lbs	2 1/4"
DLP -M36 x 4	7.0	14.0	9.8	7.0	14.7	10.5	320 Nm	55 mm
DLP -1 1/2"-6 UNC	7.0	14.0	9.8	7.0	14.7	10.5	236 Ft.Lbs	2 1/4"
DLP -M42 x 4.5	15.0	30.0	21.0	15.0	31.5	22.5	600 Nm	75 mm
DLP -1 3/4"-5 UNC	15.0	30.0	21.0	15.0	31.5	22.5	440 Ft.Lbs	3"
DLP -M48 x 5	20.0	40.0	28.0	20.0	42.0	30.0	800 Nm	75 mm
DLP -2"-4.5 UNC	20.0	40.0	28.0	20.0	42.0	30.0	590 Ft.Lbs	3"

* Safety factor 4:1

De-centered Lifting Point - DLP



Art. no. Standard bolt length	L	Art.no. Long bolt length**	L2	Code	B	C	D	E	F	G	L1	M	X	Y	Z	Weight Kgs
Z102208	13	Z1022080L	97.5	DLP-M8 x 1.25	35	48	10	39	14	10	78	8	30	55	26	0.3
Z102210	13	Z1022100L	97.5	DLP-M10 x 1.5	35	48	10	39	14	10	78	10	30	55	26	0.3
Z102212	23	Z1022120L	118	DLP-M12 x 1.75	35	48	12	51	20	14	91	12	44	59	32	0.5
Z102216	23	Z1022160L	158	DLP-M16 x 2	35	48	12	51	20	14	91	16	44	59	32	0.5
Z102220	34	Z1022200L	198	DLP-M20 x 2.5	54	88	18	71	28	18	145	20	58	90	48	1.6
Z102224	34	Z1022240L	238	DLP-M24 x 3	54	88	18	71	28	18	145	24	58	90	48	1.7
Z102230	53	Z1022300L	295	DLP-M30 x 3.5	82	94	26	104	39	27	182	30	88	122	75	5.0
Z102236	53	Z1022360L	295	DLP-M36 x 4	82	94	26	104	39	27	182	36	88	122	75	5.2
Z102242	73	Z1022420L	293	DLP-M42 x 4.5	100	103	36	136	54	34	216	42	113	156	110	11.6
Z102248	73	Z1022480L	293	DLP-M48 x 5	100	103	36	136	54	34	216	48	113	156	110	11.9

** Long bolt supplied with nut and washer.

Spare parts - Standard length and long length bolts are available as spare parts.

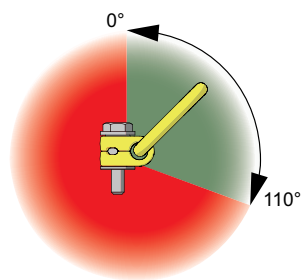
DLP with UNC thread



Art. no. Standard bolt length	L	Art.no. Long bolt length**	L2	Code	B	C	D	E	F	G	L1	X	Y	Z	M inch	Weight kgs
Z102308	13	Z1023080L	97.5	DLP-5/16"-18 UNC	35	48	10	39	14	10	78	30	55	26	5/16"	0.3
Z102310	13	Z1023100L	97.5	DLP-3/8"-16 UNC	35	48	10	39	14	10	78	30	55	26	3/8"	0.3
Z102312	23	Z1023120L	118	DLP-1/2"-13 UNC	35	48	12	51	20	14	91	44	59	32	1/2"	0.5
Z102316	23	Z1023160L	158	DLP-5/8"-11 UNC	35	48	12	51	20	14	91	44	59	32	5/8"	0.5
Z102320	34	Z1023200L	198	DLP-3/4"-10 UNC	54	88	18	71	28	18	145	58	90	48	3/4"	1.6
Z102321	34	Z1023210L	238	DLP-7/8"-9 UNC	54	88	18	71	28	18	145	58	90	48	7/8"	1.6
Z102324	34	Z1023240L	238	DLP-1"-8 UNC	54	88	18	71	28	18	145	58	90	48	1"	1.7
Z102330	53	Z1023300L	295	DLP-1 1/4"-7 UNC	82	94	26	104	39	27	182	88	122	75	1 1/4"	5.5
Z102336	53	Z1023360L	295	DLP-1 1/2"-6 UNC	82	94	26	104	39	27	182	88	122	75	1 1/2"	5.7
Z102342	73	Z1023420L	293	DLP-1 3/4"-5 UNC	100	103	36	136	54	34	216	113	156	110	1 3/4"	11.7
Z102348	73	Z1023480L	293	DLP-2"-4.5 UNC	100	103	36	136	54	34	216	113	156	110	2"	12.1

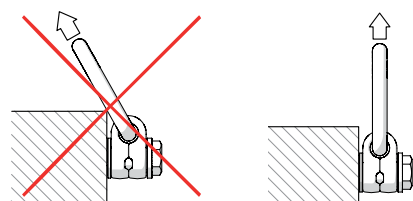
** Long bolt supplied with nut and washer.

Spare parts - Standard length and long length bolts are available as spare parts.

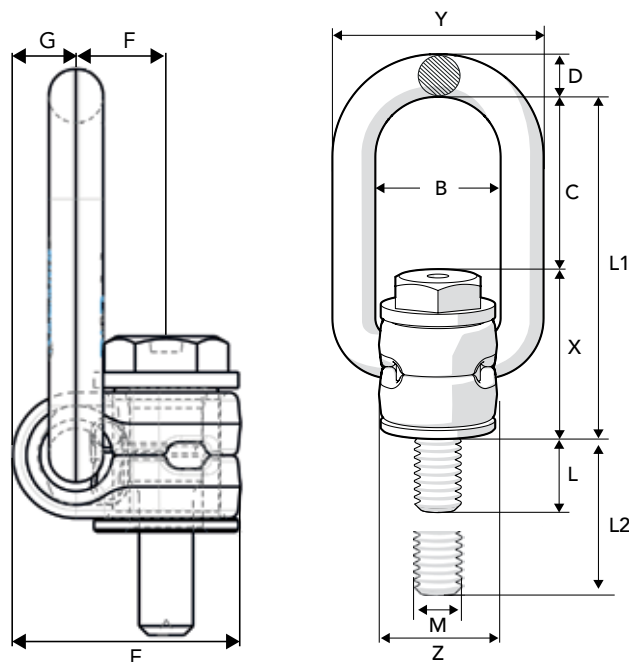


The DLP can only be loaded from 0 - 110 degrees. Rotation around bolt axis when loaded at 0 - 15 degrees is not allowed.

User advice



Make sure the D-ring does not lie against the load surface during lift.



Tight space



Limited height

Vertical lift

Angular lift



Vertical rotation
under load

Tilting under load



Sensitive load
surface

Single part lift

Multiple part lift



Integrated
combination
(hook or link)

RFID prepared



Ball-bearing

Lifting Point - BLP

The BLP is a very versatile Lifting Point and can safely be used for most applications. The ball-bearings in the BLP allow the load to be rotated during the lift, which is especially good when maintenance is needed on heavy tools and other types of equipment.

If the load surface is sensitive to impacts or scratches, the BLP is a good choice as it builds out from the load which makes it less likely that the lifting equipment will come in contact with it causing damage.

The housing of the BLP has a hexagon shape for easy mounting and dismounting and is also clearly marked with information such as Working Load Limit, mounting torque and manufacturer ID so it's always available to the operator.

As with all Gunnebo Industries products, each BLP sold have been proof loaded to 2.5 times the Working Load Limit and visually inspected by a licensed inspector. This is according to our knowledge and experience the most reliable method to detect possible deviations on the product or in the production process. We don't gamble with safety! All Gunnebo Industries Lifting Points are CE-marked.



Working Load Limits* - BLP

Symmetric Load (tonnes)															Tightening torque	Spanner size
	No. of legs	Angle β	No. of legs	Angle β	No. of legs	Angle β	No. of legs	Angle β	No. of legs	Angle β	No. of legs	Angle β	No. of legs	Angle β		
	1	0°	1	90°	2	0°	2	0-45°	2	90°	2 symmetric	0-45° 45-60°	3 & 4 symmetric	0-45° 45-60°		
BLP -M8 x 1.25		0.6		0.3		1.2		0.4		0.6		0.4 0.3		0.6 0.45	10 Nm	36 mm
BLP -5/16"-18 UNC		0.6		0.3		1.2		0.4		0.6		0.4 0.3		0.6 0.45	7 Ft.Lbs	1 1/2"
BLP -M10 x 1.5		1.0		0.5		2.0		0.7		1.0		0.7 0.5		1.3 0.75	15 Nm	36 mm
BLP -3/8"-16 UNC		0.8		0.4		1.6		0.5		0.8		0.5 0.4		0.8 0.60	11 Ft.Lbs	1 1/2"
BLP -M12 x 1.75		1.5		0.75		3.0		1.1		1.5		1.1 0.75		1.5 1.1	27 Nm	36 mm
BLP -1/2"-13 UNC		1.5		0.75		3.0		1.1		1.5		1.0 0.75		1.5 1.1	20 Ft.Lbs	1 1/2"
BLP -M16 x 2		3.0		1.5		6.0		2.1		3.0		2.1 1.5		3.1 2.2	60 Nm	36 mm
BLP -5/8"-11 UNC		3.0		1.5		6.0		2.1		3.0		2.1 1.5		3.1 2.2	44 Ft.Lbs	1 1/2"
BLP -M20 x 2.5		5.0		2.5		10.0		3.5		5.0		3.5 2.5		5.2 3.7	90 Nm	50mm
BLP -3/4"-10 UNC		4.5		2.25		9.0		3.1		4.5		3.1 2.25		4.7 3.3	66 Ft.Lbs	2"
BLP -7/8"-9 UNC		6.0		3.0		12.0		4.2		6.0		4.2 3.0		6.3 4.5	66 Ft.Lbs	2"
BLP -M24 x 3		7.0		4.0		14.0		5.6		8.0		5.6 4.0		8.4 6.0	135 Nm	50mm
BLP -1"-8 UNC		7.0		4.0		14.0		5.6		8.0		5.6 4.0		8.4 6.0	100 Ft.Lbs	2"
BLP -M30 x 3.5		12.0		6.0		24.0		8.4		12.0		8.4 6.0		12.6 9.0	270 Nm	65 mm
BLP -1 1/4"-7 UNC		12.0		6.0		24.0		8.4		12.0		8.4 6.0		12.6 9.0	200 Ft.Lbs	2 5/8"
BLP -M36 x 4		14.0		8.0		28.0		11.2		16.0		11.2 8.0		16.8 12.0	320 Nm	65 mm
BLP -1 1/2"-6 UNC		14.0		8.0		28.0		11.2		16.0		11.2 8.0		16.8 12.0	236 Ft.Lbs	2 5/8"
BLP -M42 x 4.5		16.0		10.0		32.0		14.0		20.0		14.0 10.0		21.0 15.0	600 Nm	85 mm
BLP -1 3/4"-5 UNC		16.0		10.0		32.0		14.0		20.0		14.0 10.0		21.0 15.0	440 Ft.Lbs	3 1/8"
BLP -M48 x 5		18.0		13.0		36.0		18.2		26.0		18.2 13.0		27.3 19.5	800 Nm	85 mm
BLP -2"-4.5 UNC		18.0		13.0		36.0		18.2		26.0		18.2 13.0		27.3 19.5	590 Ft.Lbs	3 1/8"

* Safety factor 4:1

Ball-bearing Lifting Point - BLP



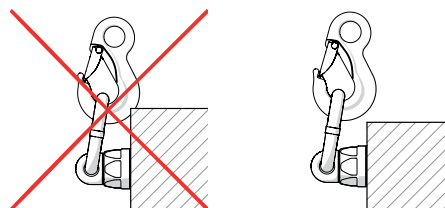
Art. no.	Code	B	C	D	Dimensions in mm						Weight kgs
					L	L1	M	X	Y	Z	
Z102008	BLP-M8 x 1.25	35	55	13	16	112	8	57	61	Ø42	0.6
Z102010	BLP-M10 x 1.5	35	55	13	20	112	10	57	61	Ø42	0.6
Z102012	BLP-M12 x 1.75	35	55	13	24	112	12	57	61	Ø42	0.6
Z102016	BLP-M16 x 2	35	55	13	30	112	16	57	61	Ø42	0.6
Z102020	BLP-M20 x 2.5	34	57	17	30	132	20	75	67	Ø59	1.3
Z102024	BLP-M24 x 3	50	70	17	36	145	24	75	84	Ø59	1.5
Z102030	BLP-M30 x 3.5	54	96	22	45	102	30	106	99	Ø74	3.4
Z102036	BLP-M36 x 4	54	96	22	54	102	36	106	99	Ø74	3.5
Z102042	BLP-M42 x 4.5	70	120	28	63	242	42	122	127	Ø93	6.5
Z102048	BLP-M48 x 5	70	120	28	72	242	48	122	127	Ø93	6.8

BLP with UNC thread

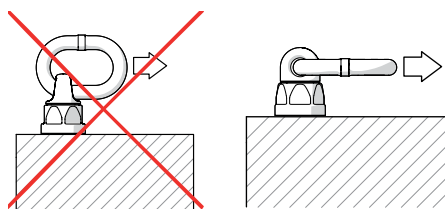


Art. no.	Code	B	C	D	Dimensions in mm						M inch	Weight kgs
					L	L1	X	Y	Z			
Z102108	BLP-5/16"-18 UNC	35	55	13	16	112	57	61	Ø42	5/16"	0.6	
Z102110	BLP-3/8"-16 UNC	35	55	13	20	112	57	61	Ø42	3/8"	0.6	
Z102112	BLP-1/2"-13 UNC	35	55	13	24	112	57	61	Ø42	1/2"	0.6	
Z102116	BLP-5/8"-11 UNC	35	55	13	30	112	57	61	Ø42	5/8"	0.6	
Z102120	BLP-3/4"-10 UNC	34	57	17	30	132	75	67	Ø59	3/4"	1.3	
Z102121	BLP-7/8"-9 UNC	34	57	17	30	132	75	67	Ø59	7/8"	1.3	
Z102124	BLP-1"-8 UNC	50	70	17	38	145	75	84	Ø59	1"	1.5	
Z102130	BLP-1 1/4"-7 UNC	54	96	22	48	202	106	99	Ø74	1 1/4"	3.4	
Z102136	BLP-1 1/2"-6 UNC	54	96	22	57	202	106	99	Ø74	1 1/2"	3.6	
Z102142	BLP-1 3/4"-5 UNC	70	120	28	67	242	122	127	Ø93	1 3/4"	6.6	
Z102148	BLP-2"-4.5 UNC	70	120	28	76	242	122	127	Ø93	2"	7.0	

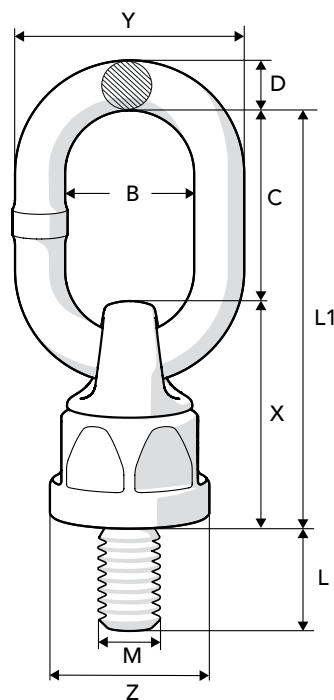
User advice



Make sure the D-ring does not lie against the load surface during lift.



Never side-load the BLP.



Tight space



Limited height

Vertical lift



Angular lift



Vertical rotation
under load



Tilting under load



Sensitive load
surface



Single part lift



Multiple part lift



Integrated
combination
(hook or link)



RFID prepared



Gunnebo Industrier AB

Tel: +46 21 83 82 00

E-mail: export@gunneboindustries.com

Sales Offices

Gunnebo Industries Pty Ltd, AUSTRALIA

Tel: +61 7 3451 0900

E-mail: general.info@gunneboindustries.com.au

Gunnebo Industries Co. LTD, P.R of CHINA

Tel: +86 512 5525 2200

E-mail: info@gunnebolifting.cn

Gunnebo Industries GmbH, GERMANY

Tel: +49 273 989 720

E-mail : info@gunneboindustries.de

Gunnebo Johnson Corporation, NORTH AMERICA

Tel: +1 918 832 8933

E-mail: sales@gjcorp.com

Gunnebo Anja Industrier AS, NORWAY

Tel: +47 561 933 00

E-Mail: sales@gunneboindustrier.no

Gunnebo Industries Sp. z o.o, POLAND

Tel: +48 552 422 926

E-mail: zawiesia@gunneboindustries.pl

Gunnebo Industries (Pty) Ltd, SOUTH AFRICA

Tel: +27 11 614 6078

E-mail: info@gunnebolifting.co.za

Gunnebo Industries Ltda, SOUTH AMERICA

Tel: +55 11 4055 9800

E-mail: vendas@gunneboindustries.com.br

Gunnebo Industrier AB, SWEDEN

Tel: +46 31 764 37 00

E-mail: gbg@gunneboindustries.com

Gunnebo Industries Ltd, UNITED KINGDOM

Tel: +44 152 752 2560

E-mail: sales@gunneboindustries.co.uk



GUNNEBO
Industries

gunneboindustries.com

August 2018

©All rights in this publication reserved by Gunnebo Industrier AB